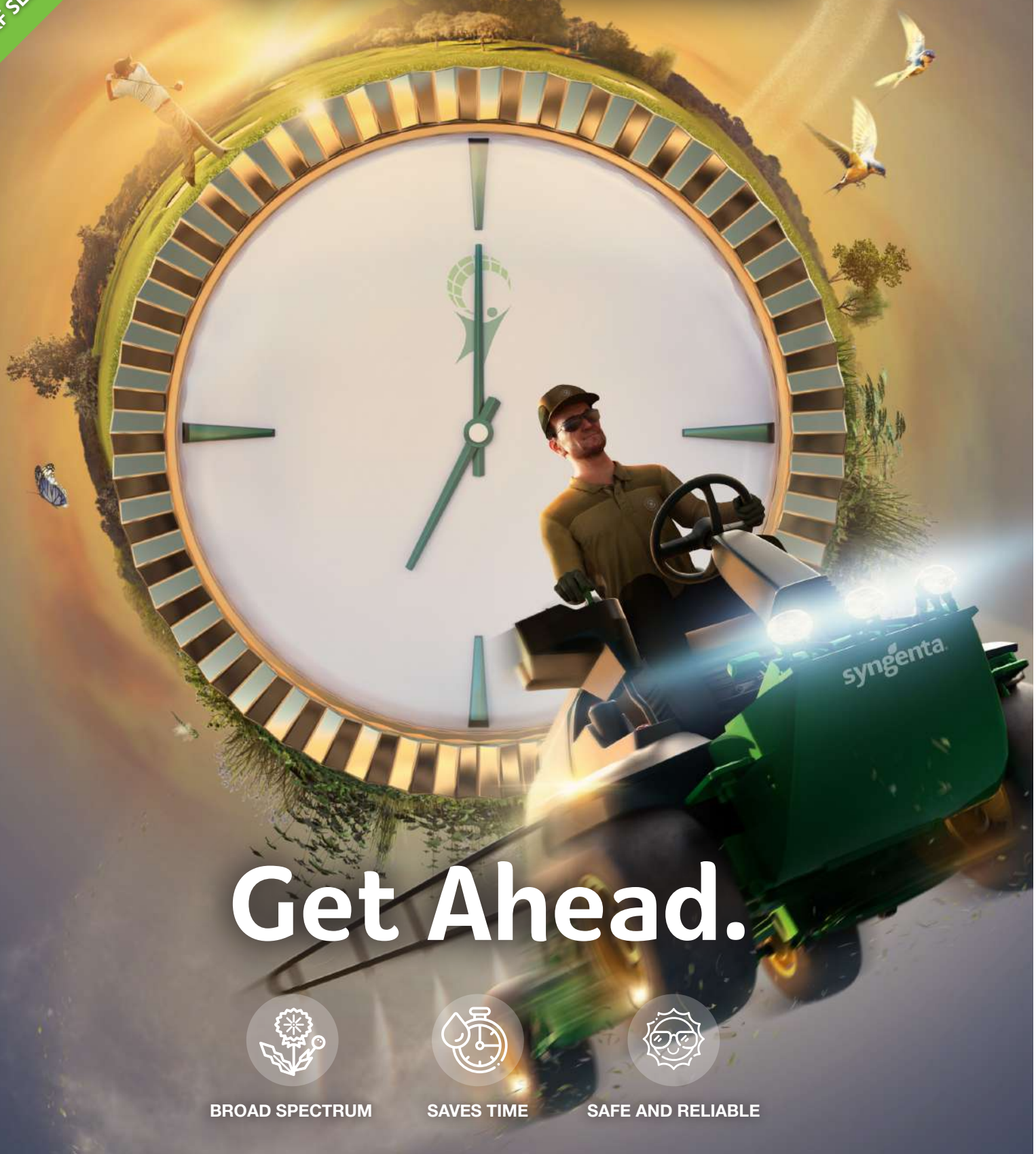


NEW!
TURF SELECTIVE HERBICIDE

Overtake.



Get Ahead.



BROAD SPECTRUM



SAVES TIME



SAFE AND RELIABLE

 **Overtake**[®]
Herbicide

syngenta.

Spring clean of weeds in turf

Spring application of **Overtake** can clean out turf of weed competition

- Stronger turf growth and recovery
- Improved playing surfaces
- More efficient use of fertiliser, water and other inputs

Weeds compete with turf for light, moisture and nutrients. Removing weed competition early in the season ensures more of the inputs you put on are used for turf growth – creating stronger more resilient turf and better playing conditions.

Deliver the quality turf you want – not weeds that you don't.



Overtake targets a wide spectrum of broad-leaved weed species problematic in turf

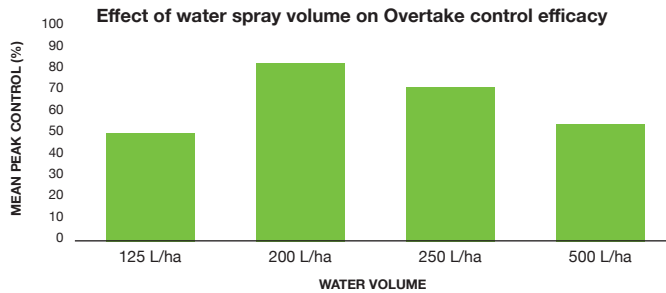
Field trials have shown spring application of **Overtake**, when weeds are actively growing, targets smaller, immature weeds when they are more susceptible.

Susceptible weeds

Common chickweed (<i>Stellaria media</i>)	Speedwell (<i>Veronica spp.</i>)	Purple clover (<i>Trifolium pratense</i>)	Mouse ear (<i>Cerastium spp.</i>)
			
Common daisy (<i>Bellis perennis</i>)	White clover (<i>Trifolium repens L.</i>)	Creeping buttercup (<i>Ranunculus repens</i>)	Dandelion (<i>Taraxacum officinale</i>)
			

Overtake saves you time

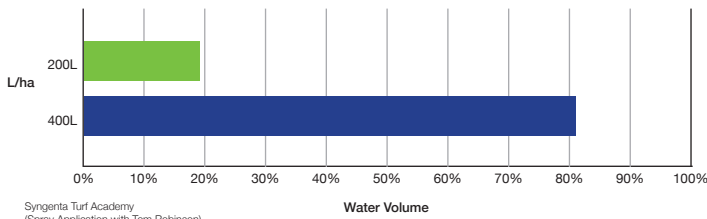
- **Reliable** results first time
- **Optimum** performance at 200 L/ha – more efficient spraying
- **Highly** compatible for tank-mixing



Application research has shown optimum performance and turf safety from application at 200 L/ha spray volume.
Average from 21 turf trials across Europe.

What water volume do you currently use for herbicide application today?

Survey of 21 Turf Managers 2021



Syngenta Turf Academy
(Spray Application with Tom Robinson)

Overtake application offers significant time saving opportunities for the 80% of operators currently spraying herbicides at 400 L/ha.

“

Overtake covers the full spectrum of weeds we look to control in the spring. The application research has been valuable, as we now have the confidence to apply at 200 L/ha – which will save us time and fits with other applications during a busy period. It looked good that we saw no adverse effect on turf and growth quickly filled in the small gaps left with early season weed removal.



IAN CAMBRIDGE, COURSE MANAGER
SAFFRON WALDEN GOLF CLUB

Outstanding turf safety with Overtake

- **No hold up** in spring turf recovery
- **Reduced risk** if conditions change after application
- **Extensively trialled** for safety on turf species

Over 70 trials across nine countries have proved the safety of **Overtake** on turf, along with performance against a wide range of weeds under different conditions.

STRI screening showed no adverse phytotoxic effects across 19 cultivars of all key cool-season turf grass species, even at more than double recommended application rate.

Turf species screened in safety trials

Perennial ryegrass <i>Lolium perenne</i>	Chewings fescue <i>Festuca rubra ssp. commutata</i>	Slender creeping red fescue <i>Festuca rubra ssp. litoralis</i>
Bent grass <i>Agrostis spp.</i>	Smooth stalked meadow-grass <i>Poa pratensis</i>	Annual meadow-grass <i>Poa annua</i>

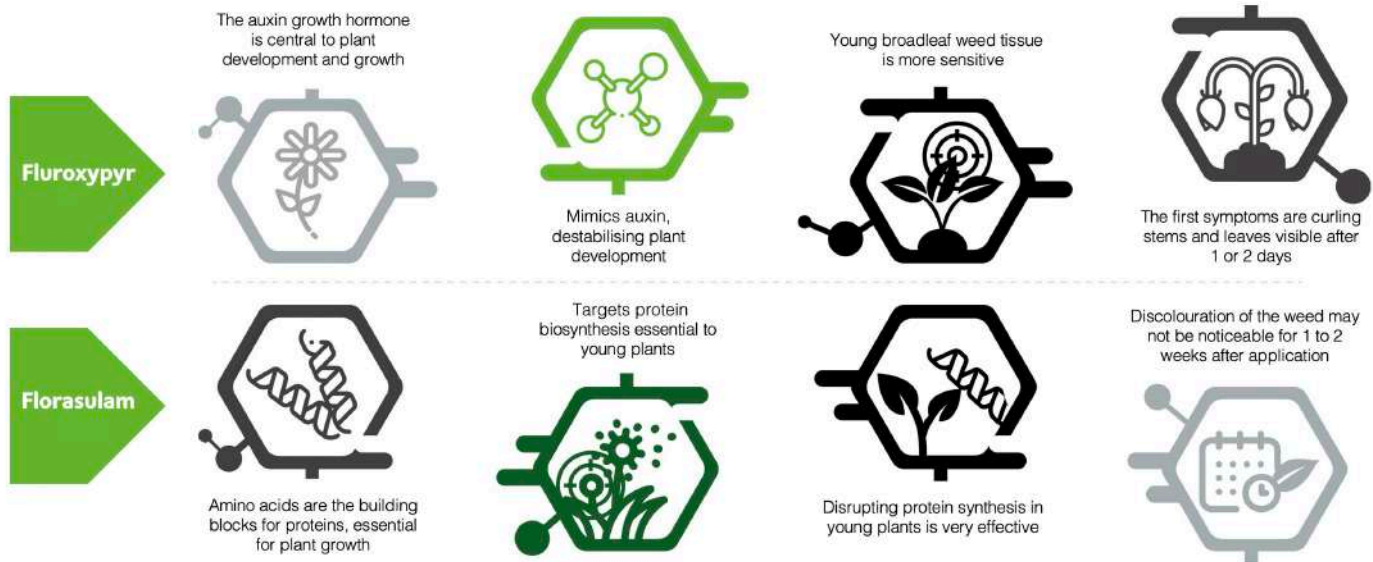
Picture: Early morning on 17th green of Ralston Golf Club - Paul Connolly

 **Overtake**[®]
Herbicide

syngenta[®]

Overtake contains two herbicide actives in one great combination

- Increased spectrum of weeds controlled
- Greater reliability in a wider range of temperatures and conditions
- Two different modes of action
- Reduced risk of weed resistance developing
- Novel suspo-emulsion formulation to maximise performance



“

Sprayer set-up and application techniques have a huge effect in the precision targeting of all treatments where we want them to have best effect. The research with Overtake has shown how to achieve better results against broad-leaved weeds using new nozzle technology and lower water volumes, along with practical advantages for greenkeepers and turf managers.



TOM ROBINSON, APPLICATION SPECIALIST
TOM ROBINSON SPRAYS

ITM herbicide strategy

Identifying and understanding more about the weeds you encounter can help create a long-term effective control strategy

- Identify problem weed spectrum
- Map areas of the course where specific weeds are an issue
- Target weeds with OVERTAKE when small
- Prevent untreated weeds setting seed
- Encourage strong turf growth to avoid future weed ingress
- Adapt environmental conditions to discourage problem weed species
- Apply herbicides with drift reduction nozzles to protect non-target areas

Get the best from Overtake application

- Apply in spring when weeds are actively growing
- Apply in 200 L/ha water volume
- Spray using Syngenta Turf 025 or 04 XC nozzles
- Avoid application to weeds or turf under stress
- Wait for three days after application before mowing



 **Overtake**[®]
Herbicide

syngenta[®]

Overtake Spring clean for weeds in turf

- Broad-spectrum of weeds
- Quick and efficient to use
- Safe and reliable



Syngenta best use recommendations

COUNTRY	UK & IRELAND
AREAS OF USE	Sports pitches, golf courses, race courses and gallops, bowling greens and airfields. Professional application to commercial and residential lawns.
FORMULATION	Suspo-emulsion concentrate (SE) containing 98.0 g/L fluroxypyr and 2.45 g/L florasulam
APPLICATION RATE	2 L/ha in established turf
WATER VOLUME	200 - 400 L/ha
APPLICATION TIMING	Apply in the spring for best performance
NUMBER OF APPLICATIONS	One application per year
PACK SIZE	1 litre (IRE) & 5 litre (UK)




Overtake[®]
Herbicide

syngenta[®]

Syngenta UK Ltd. Registered in England No. 849037. CPC4, Capital Park, Fulbourn, Cambridge CB21 5XE.
E-mail: customer.services@syngenta.com Web: www.syngentaturf.co.uk

Overtake™ is a Registered Trademark of a Syngenta Group Company. Overtake (MAPP 20559; PCS 06510) contains fluroxypyr and florasulam. All other brand names used are trademarks of other manufacturers in which proprietary rights may exist. Use plant protection products safely. Always read the label and product information before use. For further product information including warning phrases and symbols refer to www.syngentaturf.co.uk. March 2023 C4B

ICL

Distributed in the UK and Republic of Ireland by ICL Ltd. Tel: +44 1473 237100
Email: prof.sales@icl-group.com Web: www.icl-sf.com/uk-en/

TM